



INFORMATION SHEET: ANNA LOUISE INN

Cincinnati Union Bethel is pleased to announce an award of tax credits from the Ohio Housing Finance Agency. The Anna Louise Inn secured the top ranking in a competitive Permanent Supportive Housing category in Ohio. This award will help provide a complete renovation of the Anna Louise Inn and allow our mission to continue as it has for over 100 years in its Lytle Street location.

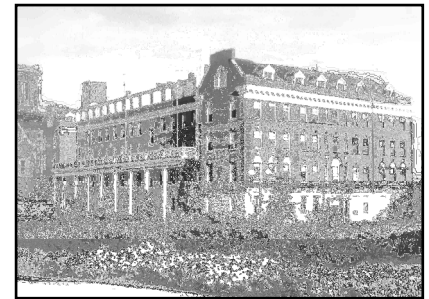
Our mission is to provide supportive services and education that assist urban women, children, families, and communities to realize their greatest potential.

Renovation Summary:

- **Total Renovation Cost:** \$12.4 million
- **Construction Schedule:** Summer 2011 through Fall 2012
- **Development Team:** Cincinnati Union Bethel and Over-the-Rhine Community Housing
- **Supportive Services:** Greater Cincinnati Behavioral Health Services

Anna Louise Inn Facts:

- Cincinnati Union Bethel is celebrating its 180th anniversary this year
- Since it was constructed in 1909, The Anna Louise Inn has provided affordable housing for women
- Since 1994, the Family Living Center has been located at the Inn providing transitional housing for homeless families/children and has been directed by Mercy Franciscan since 2004
- The *Off the Streets*SM program, a collaboration of over 25 agencies/partners has provided housing and services for women in recovery from prostitution since 2006
- Cincinnati Union Bethel's administrative offices are located in the building
- Half of the residents have lived at the Inn for over a year, some up to 30 years
- The remaining residents have lived at the Inn for less than a year during transitional periods in their lives, often as an alternative to homelessness
- Many of the current residents have had drug abuse and/or mental health issues and receive case management services in the community, while quietly living safely at the Inn



Statistics: Current vs. After Renovation

	<i>CURRENT</i>		<i>AFTER RENOVATION</i>
	Capacity	Current Occupancy	Capacity
Inn Residents	193	106	85
Family Living Center Residents	42	42	42
<i>Off the Streets</i> SM Residents	25	15	25
Total Residents	260	163	152
	Small dormitory-style units with shared bathrooms and dining.		Larger units with private bathrooms and kitchens.

Conclusion:

- The mission at the Inn will not change, however, there will be an increased focus on Permanent Supportive Housing meaning that the women will be even more likely to be stable, long-term residents
- The size of the population served after the renovation will be less than the current population
- The Inn has been a good neighbor for over 100 years and will continue to do so
- The renovation will be in compliance with all local and federal historic preservation requirements
- Cincinnati Union Bethel and its partners thank you for your continued support and we look forward to continuing our mission in a manner that respects the Cincinnati community and our neighbors